



Fx Spy Guide

Let's Started [➤](#)



Section 1

Features Explanation (with command):

Basic:-

1. Register New User: `/new_user`
2. Retrieve User ID: `/my_id`
3. Manage Metatrader accounts: `/my_accounts`
4. Connect to your Fxspy account: `/connect`

MetaTrader Account Related:-

1. View MT Account Details: `/view_account_details`
2. View All Opening Trades: `/view_open_trades`
3. View Closed Trades within 12 hours: `/view_closed_trades`
4. View MT Account Summary: `/view_summary`
5. Close All Active Trades: `/close_all_trades`
6. Disable Auto Trading: `/disable_auto_trading`



Section 1

Features Explanation (with command):

Explanation of each command:

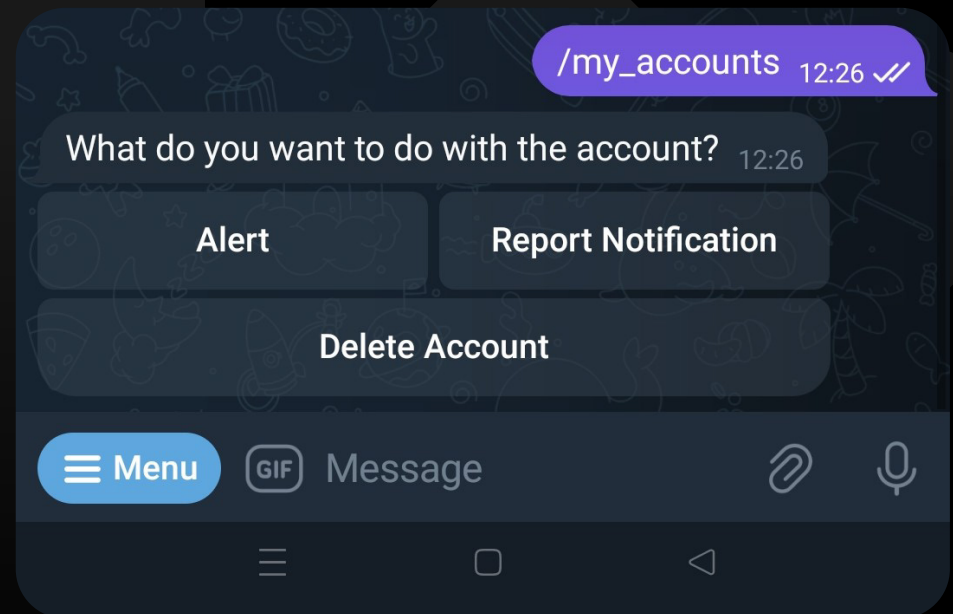
- 01 `/new_user`: Register to get User ID; User ID is the ID number set in the Fx Spy ex4 to allow Telegram from receiving information, alerts, etc. You need to fill out the name/username/email/password, you will then receive the user ID.
- 02 `/my_id`: Retrieve the user ID if it has been forgotten.

Section 1

Features Explanation (with command):

Explanation of each command:

- 03 /my_accounts: Manage different Metatrader accounts that use the same user ID. Things we can manage include:
- Alert Setting (Balance/ Drawdown/Margin - Set percentage when to send alert through Telegram)
 - Report Setting (Notification Intervals - Account Summary, set how long to receive the notification, hourly, weekly, daily or custom 1hr - 3600 seconds)
 - Delete Account (Delete MT account that is no longer in use)



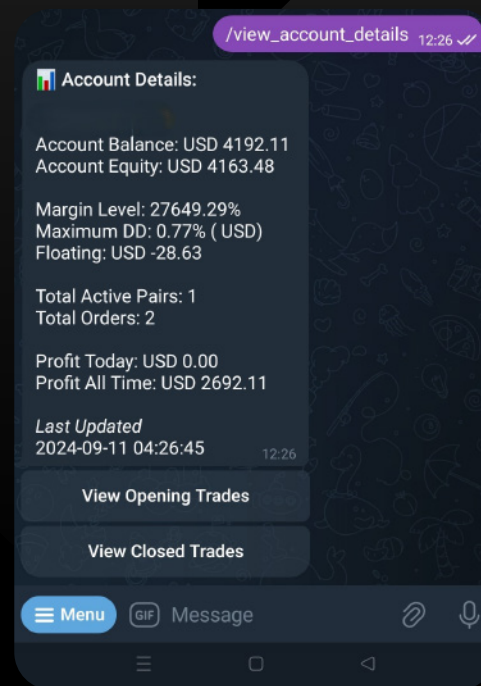


Section 1

Features Explanation (with command):

Explanation of each command:

- 04 `/connect`: Connect the Fx Spy account to your Telegram account if the bot is registered through the website dashboard.
- 05 `/view_account_details`: Choose one MT account (if running multiple) to check account details (Date, time, account label, account balance, account equity, margin level, maximum dd, floating, total active pairs, total orders, profit today, profit all time)

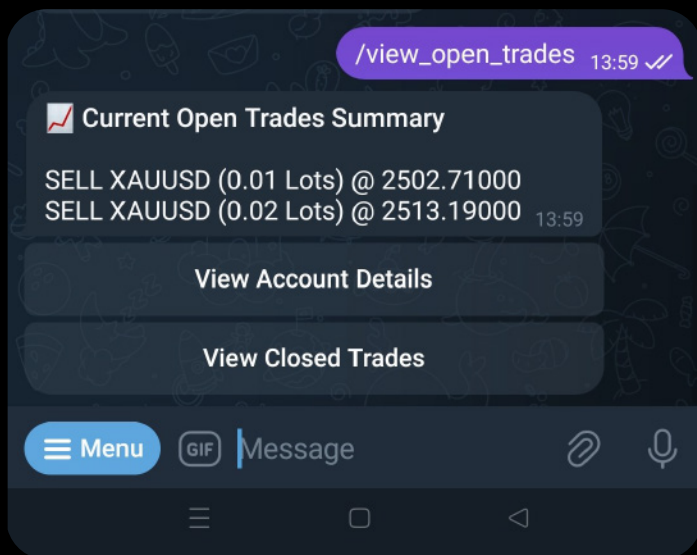


Section 1

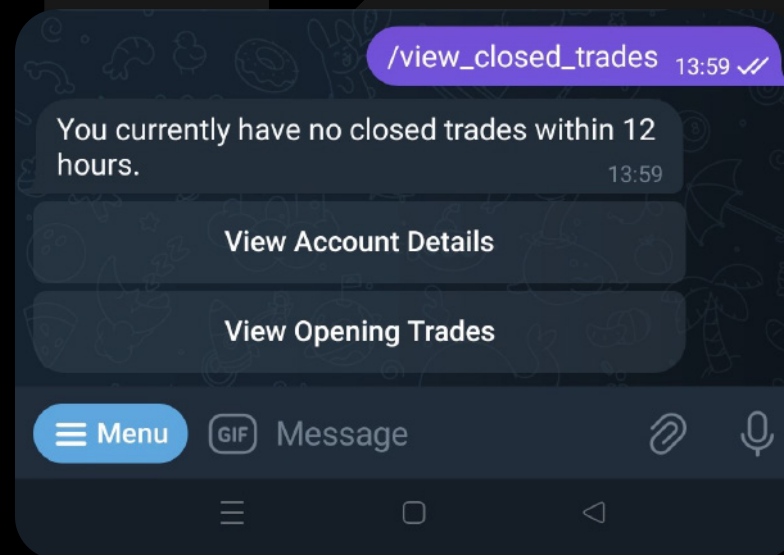
Features Explanation (with command):

Explanation of each command:

06 /view_open_trades: Check on going trades condition



07 /view_closed_trades: Check closed trades within 12 hours

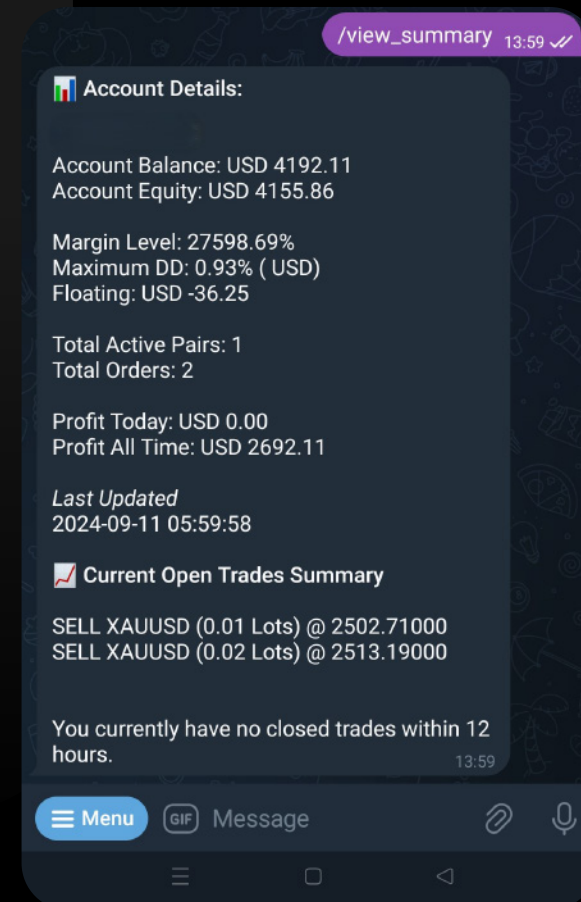


Section 1

Features Explanation (with command):

Explanation of each command:

- 08 `/view_summary`: Choose one MT account (if running multiple) to check on the summary, details including date, time, account label, account balance, account equity, margin level, maximum dd, floating, total active pairs, total orders, profit today, profit all time, current open trades summary (position, pairs, lot, and price where order placed) and closed trades within past 12 hours.

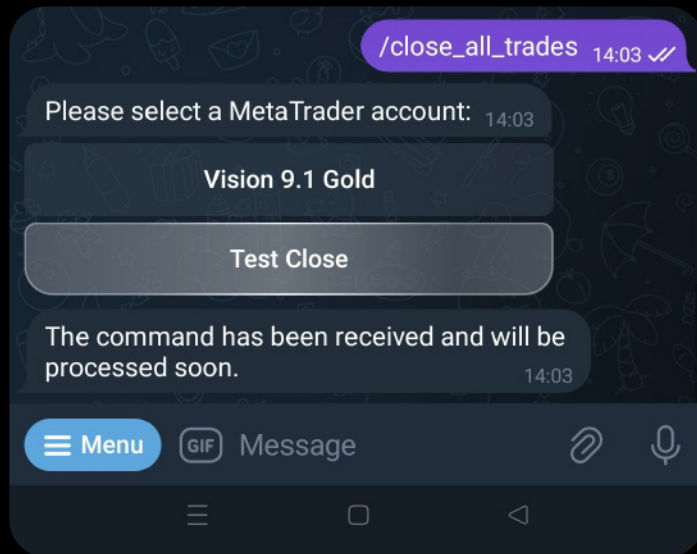


Section 1

Features Explanation (with command):

Explanation of each command:

- 09 `/close_all_trades`: Close all running trades immediately. Choose one MT account (if running multiple)

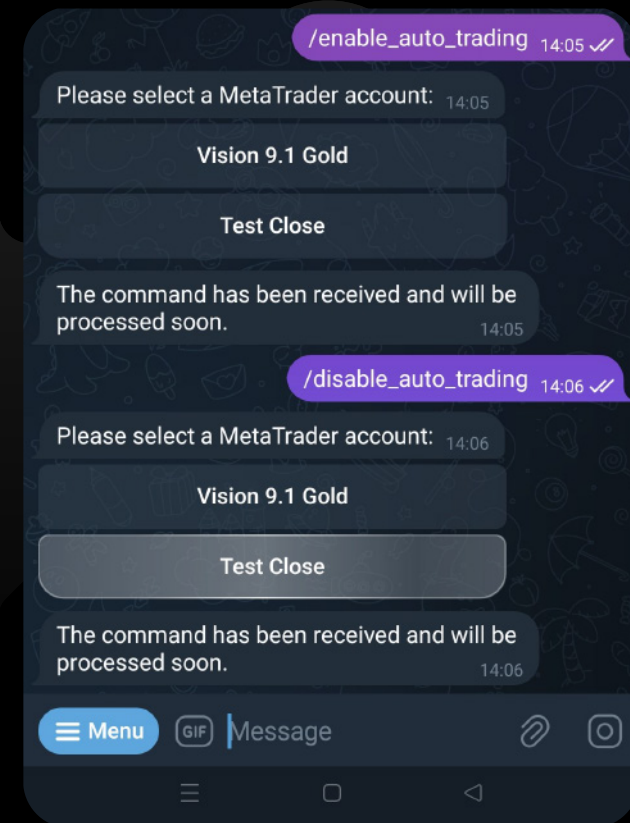


Section 1

Features Explanation (with command):

Explanation of each command:

- 10 `/enable_auto_trading`: Enable auto trading of the MT. Choose one MT account (if running multiple).
- 11 `/disable_auto_trading`: Disable auto trading of the MT. Choose one MT account (if running multiple).





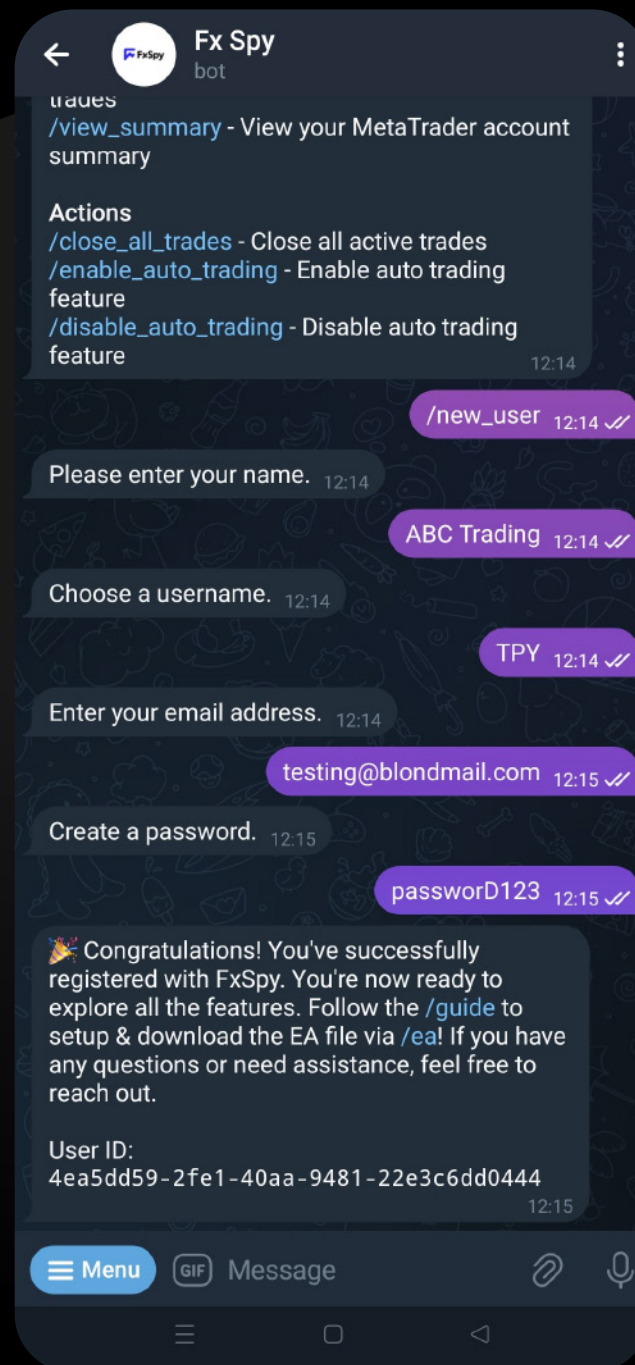
Section 2

Guide

01

Generate User ID

Select command `/new_user` and fill up the information required.





Section 2

Guide

02

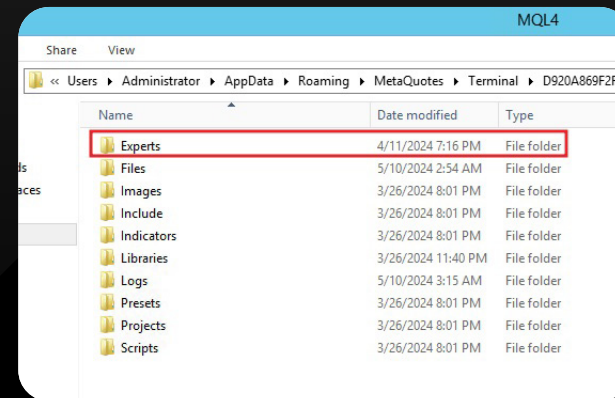
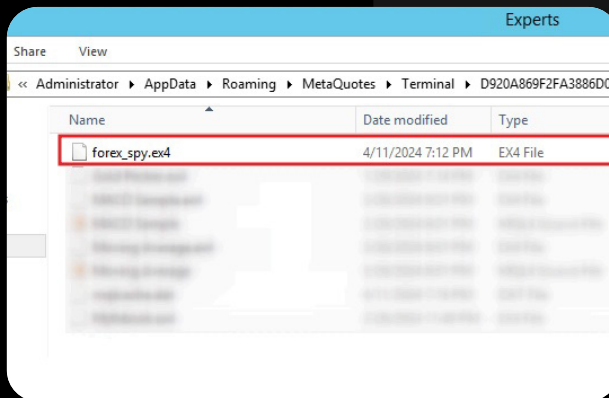
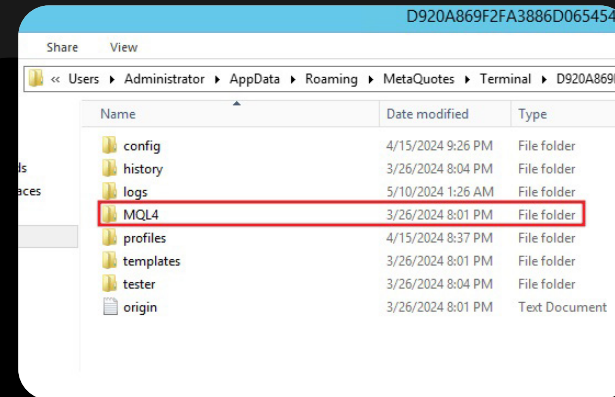
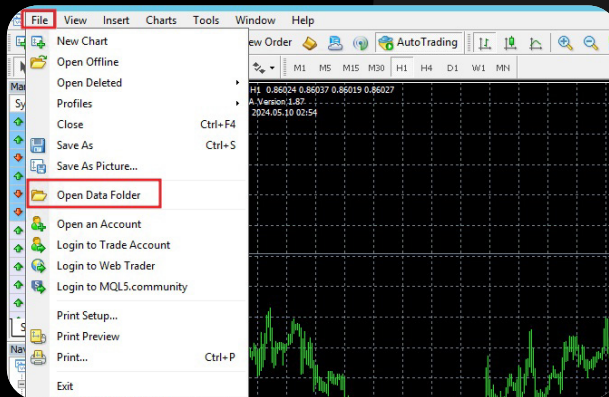
Setting Up Fx Spy.ex4

STEP 1:

Download the Fx Spy ex4.

STEP 2:

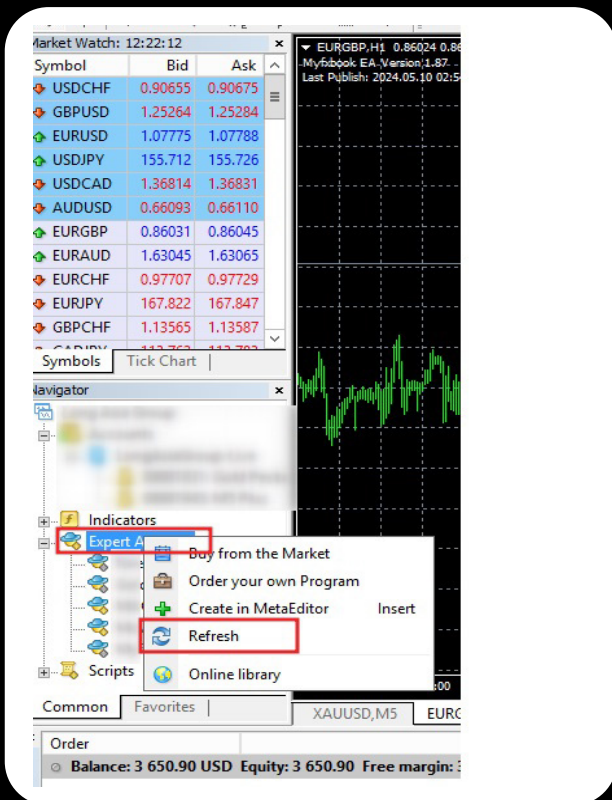
Copy the .ex4 file downloaded, paste into your desktop **MT4's MQL4 > Expert folder**.





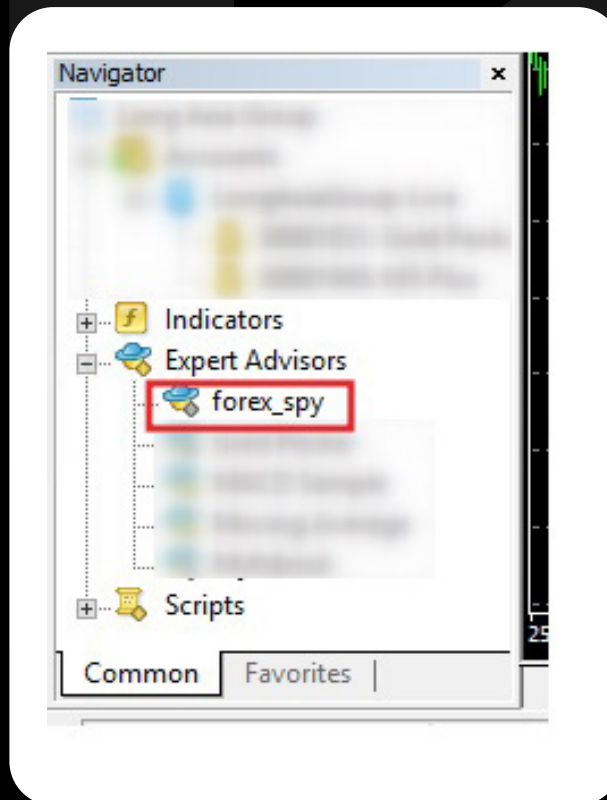
STEP 3 :

After pasting, right-click on Expert Advisor in Navigator and click Refresh to show Fx Spy.



STEP 4 :

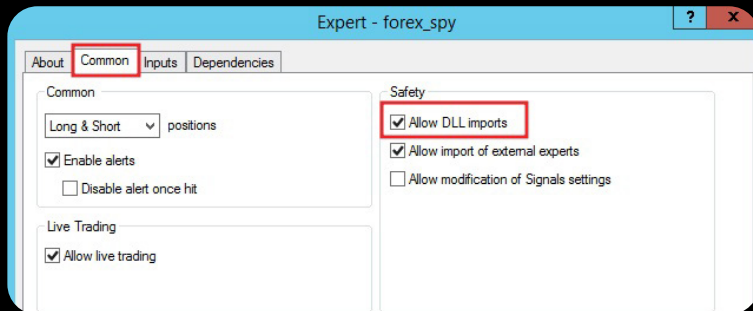
Double-click Fx Spy in Navigator to activate it.





STEP 5 :

Go to Common Tab, tick the Allow DLL Imports.



STEP 7 :

Fx Spy User ID will be received after successfully registering from /new_user. The label can be anything for you to differentiate the accounts if it's running multiple accounts. Then click OK.

STEP 6 :

Double-click Fx Spy in Navigator to activate it.

